



ECHOPANEL®

WOVENIMAGE.COM

**w*i***  
WOVEN IMAGE®  
ECHOPANEL®



WOVEN IMAGE®

## ORIGINAL THINKING: ECHOPANEL®

A landmark product in the Woven Image collection, EchoPanel® is a superior decorative panelling solution with significantly enhanced acoustic qualities and a fabric-like finish. It acts as the ideal buffer for sound, absorbing the chatter from crowded environments, and pumping music, making for a pleasant environment for those within it – and those outside these spaces, too.

EchoPanel® is truly a pioneer in its sector – in addition to its sound absorbing attributes, it is a market leader thanks to its affordable, customisation properties.

It is the high-quality, high-performance choice for the modern office, restaurant, hotel and residential space. It is durable yet flexible, easy to cut, easy to install and lightweight. EchoPanel® is also a pin-able, self-finishing product, making it an unparalleled choice for use in vertical sections of workstations and the like.

Ultimately, it is a streamlined product designed for dematerialisation. Once it has been installed in any of its many applications, it is ready to go: there is no need to upholster, paint or protect it.

Aside from the usual demands in the interior design and architecture industries, there is growing universal pressure to work sustainably, and to meet stringent quality standards at the same time. EchoPanel® was dreamed up in direct response to this. It represents eco-innovation in the truest sense: its highly recyclable nature and use of post-consumer waste sourced from recycled PET bottles to create a superior material, essentially means that EchoPanel® is a prime product of up-cycling.

The idea for EchoPanel® took seed in 1997, with the first product, the Echo™Screen fabric, launching in 1999. EchoPanel® then launched in 2004 in just two colours. Since then, it has evolved into a collection of application materials and finished products that demonstrates environmental commitment, while providing a contemporary, designer finish.

EchoPanel® now comes in a range of options in terms of thickness, colour, pattern and form. Choose from thickness variations: 24mm, 12mm, 7mm and ultra-thin Mura, with a collection of printed designs, simple acoustic tiling solutions such as Penta and Hex, three-dimensional tiles Wave and Dune, and more.

## Increased Colour Palette

Woven Image has reinvigorated EchoPanel®'s popular 12mm and 24mm colour stories with a total of 20 pigments in the 12mm collection and now 9 in the 24mm including new tones Frost #101, Mandarin #295 and Viridian Green #325. See the Acoustic Tile and Space-Dividing Systems brochures for more product.

## APPLICATION

The possibilities for application of EchoPanel® are endless. It can act as everything from a replacement for textile-covered tiles in workstation systems to a light, highly flexible and highly recyclable wall panelling and partitioning system.

EchoPanel® is the leading replacement for vertical sections in workstation systems. Weighing just 2,400 grams per square metre, it is 65% lighter than MDF or plasterboard panelling of the same thickness. Its trim design and double-sided, face-finished capabilities make it a perfect fit for slim-line framing systems.

What makes EchoPanel® so versatile is the fact that it can be customised in any number of ways. For each available thicknesses – 7mm, 12mm and 24mm – as well as in EchoPanel® Mura wall-covering, it has excellent cutting properties that make it adaptable to almost any environment.

It works well as a room divider, particularly in the 24mm version, which is available in a variety of striking profile cut-outs such as Wrap, Paling and Platoon. Working effortlessly on a CNC cutter, the 12mm version of EchoPanel® is also available as a custom-cut product: it can be produced in a feature wall tiling or panelling system format, or as a suspended partition system, and it comes in a host of intricate cut-out designs, which are unparalleled elsewhere in the market.

Part of EchoPanel®'s recent evolution has also been the transition to custom printing, which has opened up a world of possibility when it comes to colour, design and opportunities for bespoke design. The standard designs presented in this brochure are part of the ever-growing range in the EchoPanel® collection.



IMAGE FEATURES TRIMMED ECHOPANEL® TRIO IN #315 & PENDENT TANDEM IN #551

## ACOUSTIC AWARENESS

People ultimately want to feel comfortable in their environments, no matter whether they're in a professional auditory space, the workplace, in a learning environment, having dinner with friends at a restaurant or spending time at home. Unwanted sounds get in the way of that comfort by creating noise pollution that disrupts functionality.

We notice when a room's acoustics are weak: sounds reverberate through the space and it's hard to have a real conversation. Conversely, when acoustics are well designed, we don't notice them. It's therefore worth addressing acoustic properties at the initial design stage.

EchoPanel® is the perfect partner to introduce at this point in the design process. Each of the products under the EchoPanel® umbrella – from the Mura wall-covering and Echo™Tile to EchoPanel® wall paneling and ceiling systems – are optimised for acoustic performance, thanks to their NRC (Noise Reduction Coefficient) ratings, which make them highly valuable in any space.

It's an added bonus that EchoPanel® looks good; its high-end, fabric-like appearance makes it a desirable finishing material that will stand out, and in the right way.

## DESIGNED FOR CONTRACT

Staying true to the Woven Image brand, EchoPanel® is a leading, specialised contract material. It has undergone many forms of industry standard testing and complies with some of the world's highest mandatory standards.

Through the lengthy testing process, EchoPanel® has proved it can stand up to the kind of wear it will likely get when it's actually used – and, over time, its fire-retardant properties have been developed so that it is an excellent performer in the safety arena.

It holds first-class ratings in the local Australasian and International market, achieving a Group 1 rating in the 'ISO 9705' full-scale room fire test as well as being recently awarded a valuable 'GB 8624 B1 level', and the reputable, internationally recognised 'BS EN 13501.1: Classification B-S1, D0'.

## DESIGNED FOR DEMATERIALISATION

EchoPanel® is a landmark product thanks to the labour and material efficiencies it delivers, ultimately leading to significant cost savings and a reduction in the amount of material wasted in the production process.

Previously, workstations were typically made in MDF board, which required additional layers of foam-backed fabric and other materials in order to make it pin-able. As a single-sided product, MDF board then required that the same layers be applied again on the other side.

It's a time-consuming, costly process; one that results in workstations that are unnecessarily bulky in order to cater to the finishes selected. The OHS issues that would arise during the installation process would also be hazardous due to the heavy load of so many products bundled altogether.

The challenges are similar with wall paneling, as the base materials used typically need to be wrapped in multiple layers and fixed in ways that are capable of holding their weight.

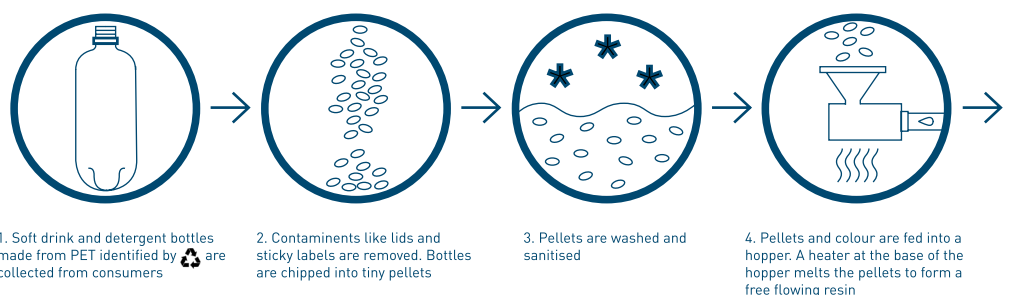
EchoPanel® resolves the issues that arise with your typical partition solutions. Its slender, pin-able nature enables it to be used as a two-sided vertical division in a workstation system: the divider width therefore need be no thicker than the extrusion supporting it.

## SUSTAINABLE INTERIORS

EchoPanel® is a product dedicated to the environment. At the core of its ethos is not only dematerialisation but recycling, targeting product stewardship.

EchoPanel® is made from up to 60% post-consumer waste sourced from recycled PET bottles [exact amounts depend on the colour of the panel]. Impressively, in 2016 alone, Woven Image saved in excess of 283 tonnes of PET plastic from going to landfills, re-purposing this waste for EchoPanel® products.

The follow-on effect is that the production process for EchoPanel® is highly efficient, resulting in energy and water savings and ultimately, a reduction in the carbon footprint of this product.



It's no wonder, then, that EchoPanel® can secure maximum credits under GECA's Green Star sustainability rating tool, as administered by the Green Building Council Australia.

### UP-CYCLED

EchoPanel® is a superior product that relies on the conversion of PET waste for its manufacture. Aside from saving tonnes of plastic waste from our oceans and landfill, the PET is converted into a more valuable product, that is EchoPanel®, boasting a guaranteed 10-year minimum life expectancy, after which the material is still 100% recyclable and reusable.

EchoPanel® is only printed with environmentally friendly pigment inks that have been specially tailored to deliver excellent light fastness while remaining low-VOC, non-flammable and non-toxic. Certified by Good Environmental Choice Australia (GECA), these water-based inks are also sustainably minded.

Like the inks in the EchoPanel® collection, the product's colourations are non-toxic. There are no harmful effects in the colouration of EchoPanel®. The fibre is coloured while it is still a solution, and all the dyes used stay in the solution, effectively becoming fibre, so there is no waste. The source fibre used in EchoPanel® fulfills the requirements of the existing European legislation regarding the use of Azo dyes.

Aside from cutting, dyeing and printing, other evolutions have seen the development of the EchoPanel® Mura Tile collection. Using heat moulds, the material can be manipulated to create a wide range of products, the possibilities for which are infinite.

### ENVIRONMENTAL THINKING: CRADLE-TO-CRADLE

EchoPanel® has been stringently evaluated under the Life Cycle Assessment test, demonstrating that it minimises waste at every stage of the production process.

At the start of its life cycle, thanks to its use of post-consumer products, EchoPanel® diverts approximately 4.2 tonnes of post-consumer PET waste from landfill for every 1,000 sheets of recycled content. By recycling PET bottles, EchoPanel® also saves 84% of the energy it takes to make these bottles from raw materials.

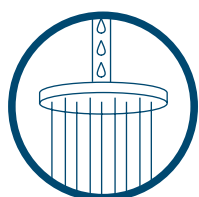
At the end of its life cycle, a workstation using EchoPanel® is easy to dismantle and separate into the relevant recycling streams. It therefore offers a significant environmental advantage compared with other fabric-covered substrates, which are often contaminated by adhesives, residual textiles and fasteners – none of which are compatible with recycling processes, and which consequently end up in landfills.

EchoPanel® challenges the way we perceive textiles and textural surfaces. It is an uncomplicated yet highly flexible product that encourages designers to explore the smart material possibilities of waste avoidance and dematerialisation in creating sustainable interiors and workplaces.

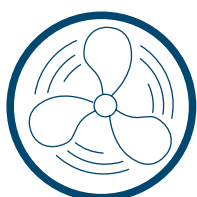
WOVENIMAGE.COM

### SERIOUS ECO- FIGURES

During 2016, Woven Image saved over 10 million large (1L) PET bottles from oceans and landfill. This figure is expected to rise significantly in the next financial year. Since the product launched in 2004, a staggering 80 million plastic bottles have been recycled to produce EchoPanel®.



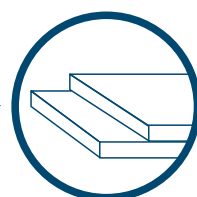
5. Resin is pumped through a sophisticated shower-rose device, known as a spinneret



6. Cold air fans 'set' the fine fibres extruded from the spinneret



7. Fibres are drawn and cut and are blended into a web






8. Web is compressed to make panel board ready for use

## SPECIFICATIONS

PRODUCT	ECHOPANEL® 7MM	ECHOPANEL® 12MM	ECHOPANEL® 24MM
TYPICAL APPLICATIONS	ACOUSTIC WALL CLADDING	WORKSTATIONS; SUSPENDED ACOUSTIC CEILING OR WALL PANELLING; ACOUSTIC TILING. (MULTI-USE DOUBLE-SIDED FINISH)	ROOM DIVIDER PANELS. (MULTI-USE FREE-STANDING DOUBLE-SIDED FINISH)
DESIGNER	WOVEN IMAGE	WOVEN IMAGE	WOVEN IMAGE
ORIGIN	MADE IN AUSTRALIA	MADE IN AUSTRALIA	MADE IN AUSTRALIA
COLOURS	<b>5</b> (SEE PAGE 7-8 FOR COLOURS)	<b>20</b> (SEE PAGE 7-8 FOR COLOURS)	<b>9</b> (SEE PAGE 7-8 FOR COLOURS)
COMPOSITION	100% PET (60% RECYCLED)	100% PET (60% RECYCLED)	100% PET (60% RECYCLED)
WEIGHT	1400G/M <sup>2</sup> (+/- 10%)	2400G/M <sup>2</sup> (+/- 10%)	3000G/M <sup>2</sup> (+/- 10%)
THICKNESS	7MM (+/- 7%)	12MM (+/- 7%)	24MM (+/- 7%)
PANEL DIMENSIONS	2700MM (+/-10MM) x 1210MM (+/-5MM)	2400MM (+/-5MM) x 1200MM (+/-10MM) [all colours excl. #500]  2420MM (+/-5MM) x 1220MM (+/-10MM) [colour #500 only]	2400MM (+/-5MM) x 1820MM (+/-10MM)

## PERFORMANCE

COLOUR FASTNESS	ISO 105-B02-1994 RATING: 6-7 AS 2001.4.21-1970 RATING: 6-7	ISO 105-B02-1994 RATING: 6-7 AS 2001.4.21-1970 RATING: 6-7	ISO 105-B02-1994 RATING: 6-7 AS 2001.4.21-1970 RATING: 6-7
FIRE TEST	AS 1530.3, ISO 9705: GROUP 1 BS 476: PART 7 CLASS 2	AS 1530.3, ISO 9705: GROUP 1 GB 8624 B1, BS EN 13501.1: CLASSIFICATION-B-S1, D0	AS 1530.3, ISO 9705: GROUP 1 ASTM E84 UNADHERED CLASS 2
SOUND ABSORPTION	AS ISO 354 - 2006 NRC VALUE: 0.25 (WITH NO AIR GAP) NRC VALUE: 0.45 (WITH 20MM AIR GAP) NRC VALUE: 0.70 (WITH 50MM AIR GAP)	AS ISO 354 - 2006 NRC VALUE: 0.35 (WITH NO AIR GAP) NRC VALUE: 0.55 (WITH 20MM AIR GAP) NRC VALUE: 0.75 (WITH 50MM AIR GAP)	AS ISO 354 - 2006 NRC VALUE: 0.65 (WITH NO AIR GAP) NRC VALUE: 0.75 (WITH 20MM AIR GAP) NRC VALUE: 0.85 (WITH 50MM AIR GAP)
VOC EMISSIONS	ASTM D5116 RATE: LESS THAN 0.02 MG/M <sup>2</sup> /HR (7 DAYS)	ASTM D5116 RATE: LESS THAN 0.02 MG/M <sup>2</sup> /HR (7 DAYS)	ASTM D5116 RATE: LESS THAN 0.02 MG/M <sup>2</sup> /HR (7 DAYS)
ENVIRONMENTAL	GREEN TAG CERTIFICATION LCA RATE: GOLD STREAMLINED GREEN RATE: LEVEL A	GREEN TAG CERTIFICATION LCA RATE: GOLD STREAMLINED GREEN RATE: LEVEL A	GREEN TAG CERTIFICATION LCA RATE: GOLD STREAMLINED GREEN RATE: LEVEL A
			



ECHOPANEL® 24MM NOW AVAILABLE IN 9 COLOURWAYS: FROST #101, MANDARIN #295 & VIRIDIAN GREEN #325. SEEN HERE IN #325 AS ACOUSTIC TILE 'BALANCE'

## COLOUR PALETTE

EchoPanel® has the most comprehensive range of colours that are 100% consistent and vibrant through to the core with an unparalleled silky, designer, surface finish. The standard range includes all 20 colours in the prominent 12mm thickness with a selection of these colours also available in the 7mm and 24mm thicknesses.

SEE PAGE 5 FOR ADDITIONAL SPECIFICATIONS & PERFORMANCE DETAILS

LEGEND:

- COLOUR AVAILABLE ECHOPANEL® 7MM
- COLOUR AVAILABLE ECHOPANEL® 12MM
- COLOUR AVAILABLE ECHOPANEL® 24MM

## NEUTRALS



542



442



444



101



402



580



908



500





---

Contact your Woven Image Account Manager for more information about the EchoPanel® colour palette or for any sampling.

## VIBRANTS



576



258



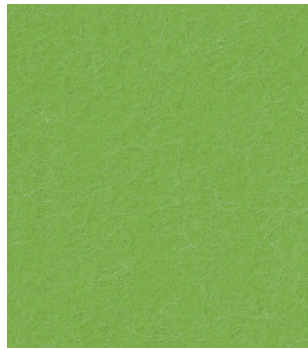
295



151



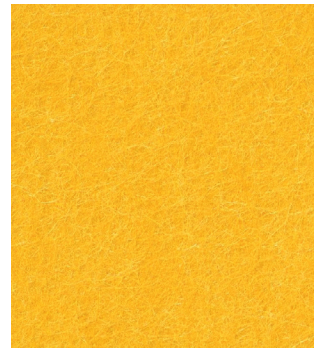
579



362



381



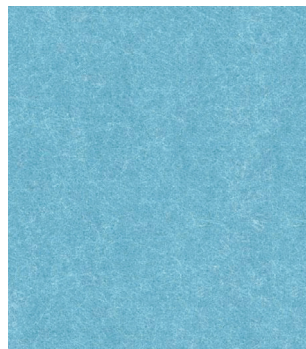
108



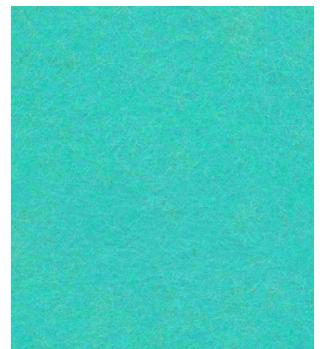
365



273



551



325



# ECHOPANEL® FREQUENCY

DESIGNED BY  
PANEL DIMENSIONS

WOVEN IMAGE

**7MM PANEL:**

2700MM (+/-10MM) X 1210MM (+/-5MM) X **7MM** (+/-7%)

**12MM PANEL:**

2400MM (+/-5MM) X 1200MM (+/-10MM) X **12MM** (ALL COLOURS EXCL. 101 & 641) (+/-7%)

2420MM (+/-5MM) X 1220MM (+/-10MM) X **12MM** (COLOURS 101 & 641 ONLY) (+/-7%)

PATTERN REPEAT  
PRINT  
PRINT TOLERANCE

HORIZONTAL 300MM, VERTICAL 320MM (HALF DROP)

ONE SIDED ONLY ON 7MM - DOUBLE SIDED ON 12MM

HORIZONTAL +/-10MM, VERTICAL +/-10MM

SEE PAGE 5 FOR ADDITIONAL SPECIFICATIONS & PERFORMANCE DETAILS  
VISIT [WWW.WOVENIMAGE.COM](http://WWW.WOVENIMAGE.COM) FOR DETAILED PRINT LAYOUT INFORMATION



IMAGE FEATURES WALL-APPLIED 7MM PANELS IN COLOURWAY #544

FREQUENCY 7MM COLOURWAYS:



101



544



641



IMAGE FEATURES A TRIMMED 12MM PANEL IN COLOURWAY #213

FREQUENCY 12MM COLOURWAYS:



100



101



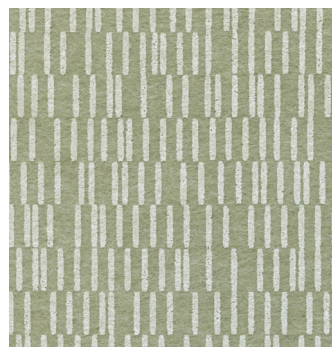
213



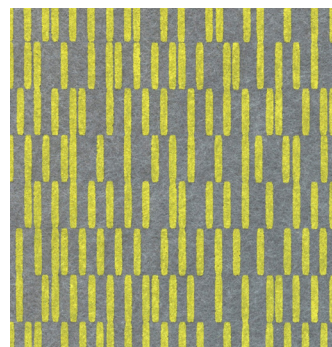
301



544



577



612



641

# ECHOPANEL® TRIO

DESIGNED BY  
PANEL DIMENSIONS

WOVEN IMAGE

**12MM PANEL:**

2400MM (+/-5MM) X 1200MM (+/-10MM) X **12MM (ALL COLOURS EXCL. 500)** (+/-7%)

2420MM (+/-5MM) X 1220MM (+/-10MM) X **12MM (COLOUR 500 ONLY)** (+/-7%)

PATTERN REPEAT  
PRINT  
PRINT TOLERANCE

HORIZONTAL 65MM, VERTICAL 65MM

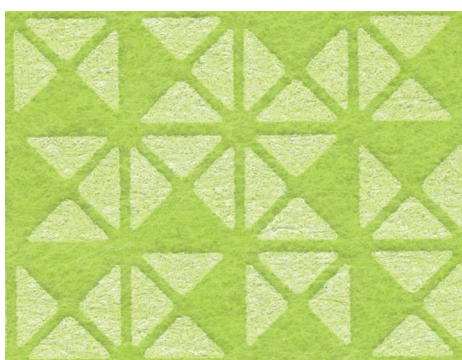
DOUBLE SIDED

HORIZONTAL +/-10MM, VERTICAL +/-10MM

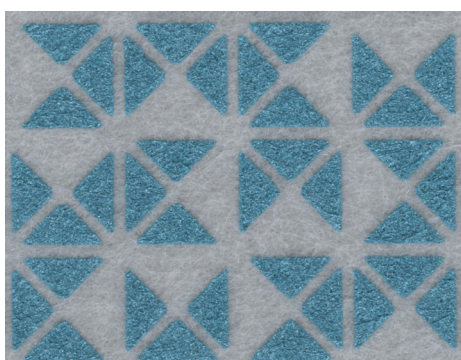
SEE PAGE 5 FOR ADDITIONAL SPECIFICATIONS & PERFORMANCE DETAILS  
VISIT [WWW.WOVENIMAGE.COM](http://WWW.WOVENIMAGE.COM) FOR DETAILED PRINT LAYOUT INFORMATION



IMAGE FEATURES A TRIMMED 12MM PANEL IN COLOURWAY #381



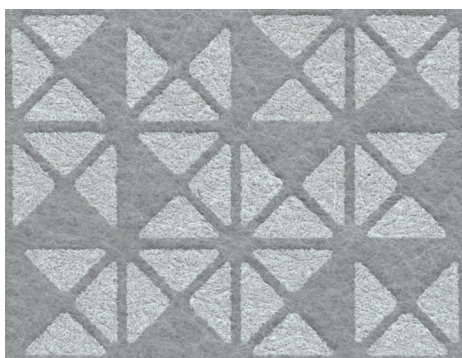
381



315



365



100



500



IMAGE FEATURES A TRIMMED ECHOPANEL® TRIO 12MM PANEL IN #365 & WALL-APPLIED ECHOPANEL® 12MM IN #365

# ECHOPANEL® CEREMONY

DESIGNED BY

WOVEN IMAGE IN COLLABORATION WITH DACOU ABORIGINAL GALLERIES - A MINNIE PWERLE ADAPTED SERIES

PANEL DIMENSIONS

**7MM PANEL:**

2700MM (+/-10MM) x 1210MM (+/-5MM) x **7MM** (+/-7%)

PATTERN REPEAT

HORIZONTAL 1200MM, VERTICAL 2680MM

PRINT

PIGMENT PRINTED, ONE SIDED ONLY (MATTE FINISH)

PRINT TOLERANCE

HORIZONTAL +/-10MM, VERTICAL +/-10MM

SEE PAGE 5 FOR ADDITIONAL SPECIFICATIONS & PERFORMANCE DETAILS  
VISIT [WWW.WOVENIMAGE.COM](http://WWW.WOVENIMAGE.COM) FOR DETAILED PRINT LAYOUT INFORMATION



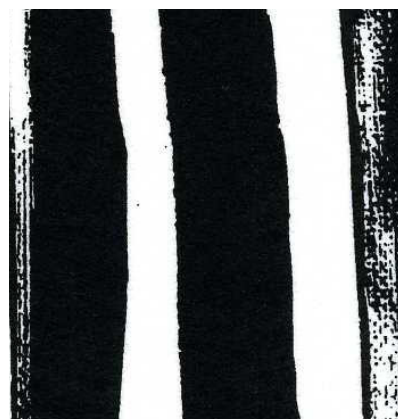
IMAGE FEATURES COLOURWAY #554



122



152



554

# ECHOPANEL® TILT

DESIGNED BY  
PANEL DIMENSIONS

PATTERN REPEAT  
PRINT  
PRINT TOLERANCE

WOVEN IMAGE

**12MM PANEL:**

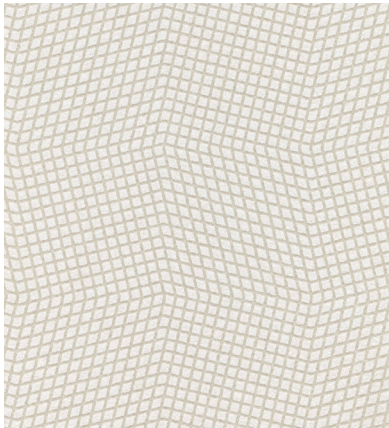
2400MM (+/-5MM) X 1200MM (+/-10MM) X **12MM**

HORIZONTAL 128MM, VERTICAL 128MM

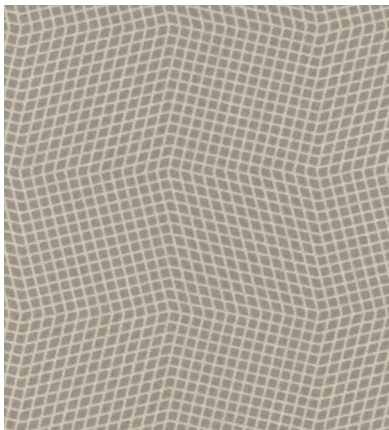
PIGMENT PRINTED, DOUBLE SIDED

HORIZONTAL +/-10MM, VERTICAL +/-10MM

SEE PAGE 5 FOR ADDITIONAL SPECIFICATIONS & PERFORMANCE DETAILS  
VISIT [WWW.WOVENIMAGE.COM](http://WWW.WOVENIMAGE.COM) FOR DETAILED PRINT LAYOUT INFORMATION



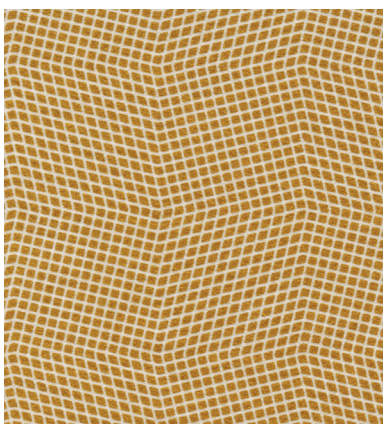
501



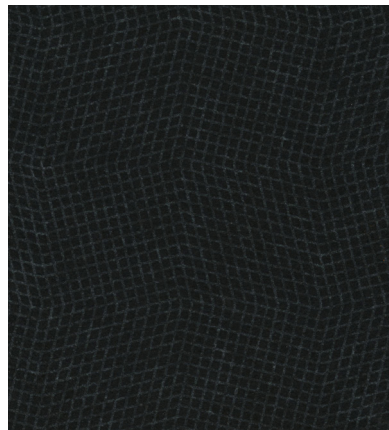
402



IMAGE FEATURES COLOURWAY #402



131



545

# ECHOPANEL® TRAPEZE

DESIGNED BY  
PANEL DIMENSIONS

WOVEN IMAGE

**12MM PANEL:**

2400MM (+/-5MM) X 1200MM (+/-10MM) X **12MM (COLOURS 150 & 443 ONLY)** (+/-7%)

2420MM (+/-5MM) X 1220MM (+/-10MM) X **12MM (COLOURS 107 & 454 ONLY)** (+/-7%)

PATTERN REPEAT  
PRINT  
PRINT TOLERANCE

HORIZONTAL 400MM, VERTICAL 590MM

PIGMENT PRINTED (PEARL/FLURO), DOUBLE SIDED

HORIZONTAL +/-10MM, VERTICAL +/-10MM

SEE PAGE 5 FOR ADDITIONAL SPECIFICATIONS & PERFORMANCE DETAILS  
VISIT [WWW.WOVENIMAGE.COM](http://WWW.WOVENIMAGE.COM) FOR DETAILED PRINT LAYOUT INFORMATION

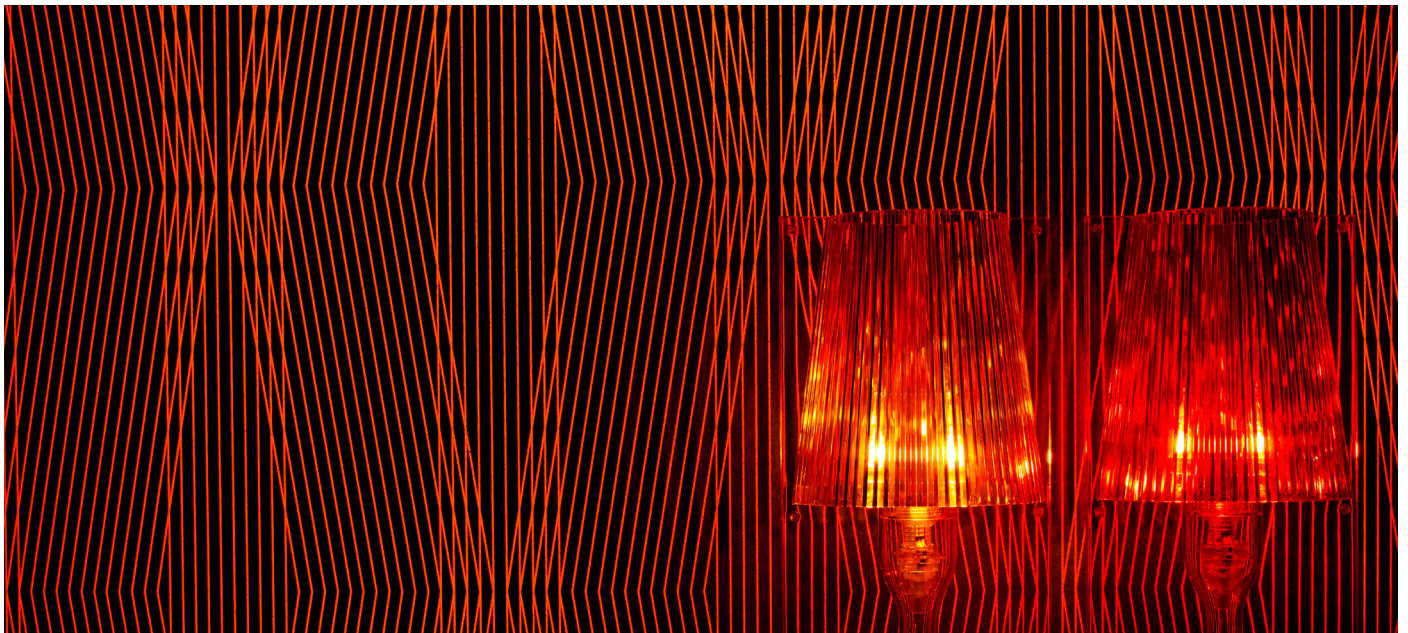


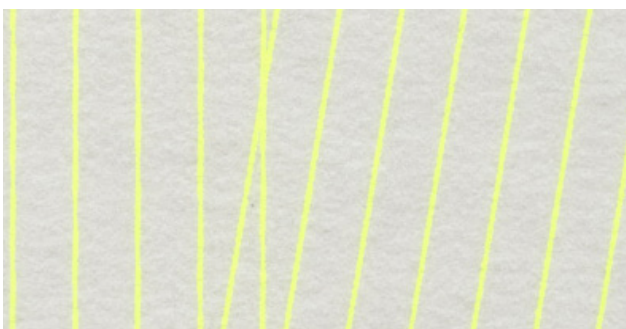
IMAGE FEATURES COLOURWAY #150 UNDER UV LIGHTING



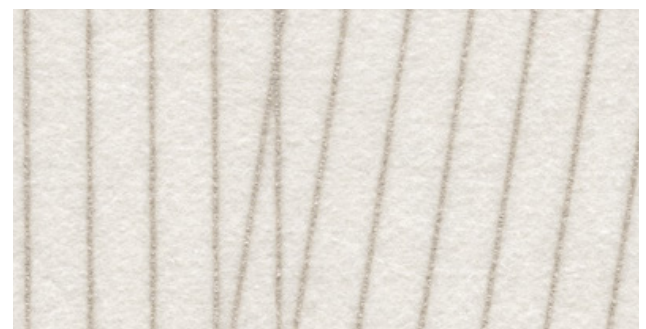
150 FLUORESCENT



443



107 FLUORESCENT



454



# ECHOPANEL® PLAID

DESIGNED BY  
PANEL DIMENSIONS

PATTERN REPEAT  
PRINT  
PRINT TOLERANCE

WOVEN IMAGE

**7MM PANEL:**

2700MM (+/-10MM) X 1210MM (+/-5MM) X **7MM** (+/-7%)

HORIZONTAL 600MM, VERTICAL 600MM

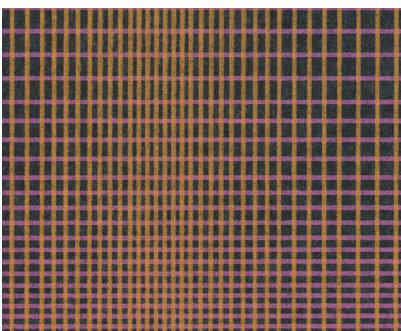
PIGMENT PRINTED, ONE SIDE ONLY

HORIZONTAL +/-10MM, VERTICAL +/-10MM

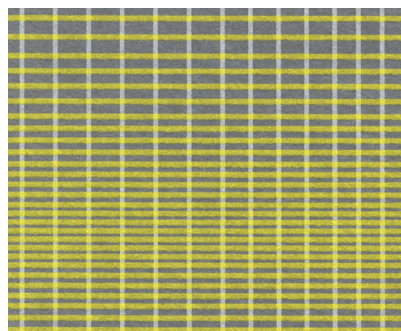
SEE PAGE 5 FOR ADDITIONAL SPECIFICATIONS & PERFORMANCE DETAILS  
VISIT [WWW.WOVENIMAGE.COM](http://WWW.WOVENIMAGE.COM) FOR DETAILED PRINT LAYOUT INFORMATION



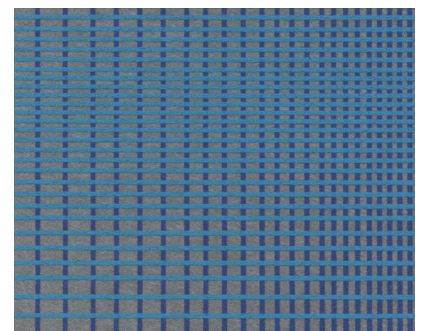
IMAGE FEATURES COLOURWAY #612



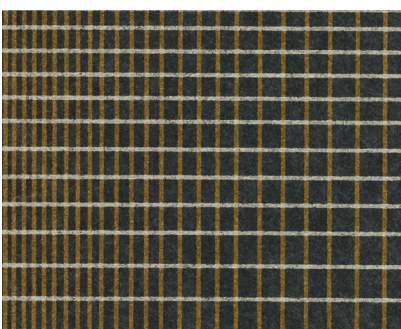
576



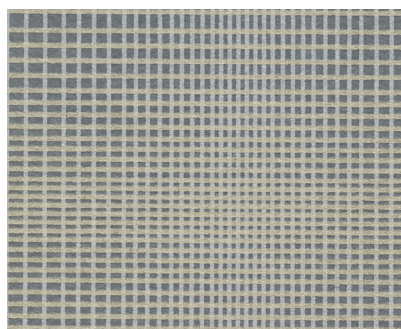
612



315



546



141



451

# ECHOPANEL® HAMMOCK

DESIGNED BY  
PANEL DIMENSIONS

PATTERN REPEAT  
PRINT  
PRINT TOLERANCE

WOVEN IMAGE

**12MM PANEL:**

2400MM (+/-5MM) X 1200MM (+/-10MM) X **12MM (COLOURS 454 & 554 ONLY)** (+/-7%)

2420MM (+/-5MM) X 1220MM (+/-10MM) X **12MM (COLOURS 324, 383 & 451 ONLY)** (+/-7%)

HORIZONTAL 267MM, VERTICAL 480MM

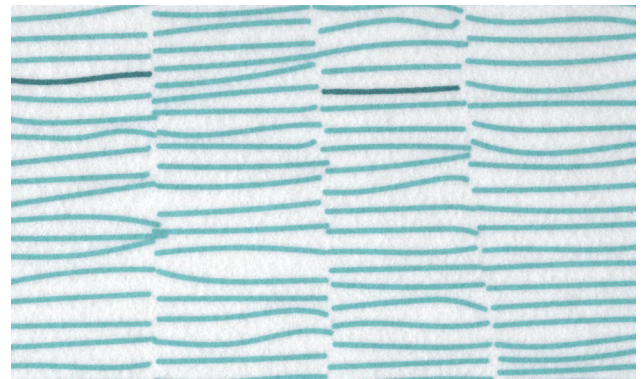
PIGMENT PRINTED (MATTE FINISH) DOUBLE SIDED

HORIZONTAL +/-10MM, VERTICAL +/-10MM

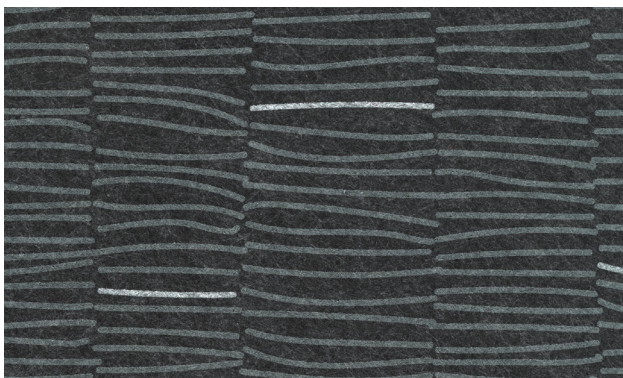
SEE PAGE 5 FOR ADDITIONAL SPECIFICATIONS & PERFORMANCE DETAILS  
VISIT [WWW.WOVENIMAGE.COM](http://WWW.WOVENIMAGE.COM) FOR DETAILED PRINT LAYOUT INFORMATION



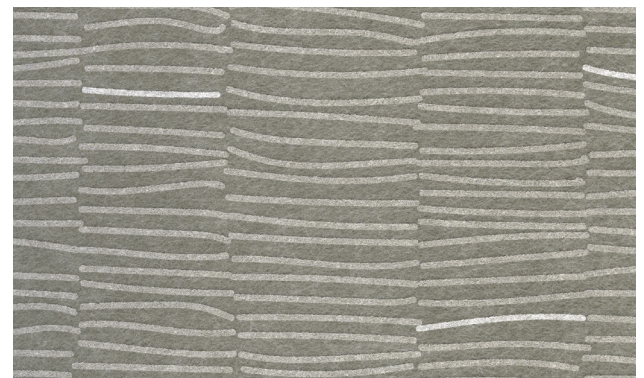
383



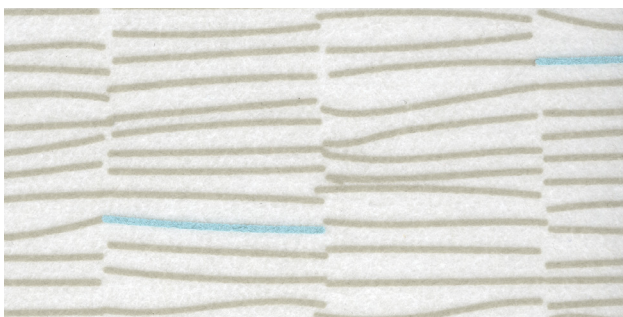
324



554



454



451



MOCK-UP OF ECHOPANEL® HAMMOCK  
COLOURWAY #383 ON A WORKSTATION

# ECHOPANEL® STRIAE

DESIGNED BY  
PANEL DIMENSIONS

PATTERN REPEAT  
PRINT  
PRINT TOLERANCE

WOVEN IMAGE

**7MM PANEL:**

2700MM (+/-10MM) X 1210MM (+/-5MM) X **7MM** (+/-7%)

HORIZONTAL 600MM, VERTICAL N/A

PIGMENT PRINTED, ONE SIDE ONLY

HORIZONTAL +/-10MM, VERTICAL +/-10MM

SEE PAGE 5 FOR ADDITIONAL SPECIFICATIONS & PERFORMANCE DETAILS  
VISIT [WWW.WOVENIMAGE.COM](http://WWW.WOVENIMAGE.COM) FOR DETAILED PRINT LAYOUT INFORMATION



IMAGE FEATURES COLOURWAY #402



402



448



501



545

# ECHOPANEL® HEX

DESIGNED BY  
PANEL DIMENSIONS

BANG DESIGN, FOR WOVEN IMAGE

**7MM PANEL:**

2700MM (+/-10MM) X 1210MM (+/-5MM) X **7MM** (+/-7%)

**12MM PANEL:**

2400MM (+/-5MM) X 1200MM (+/-10MM) X **12MM (COLOUR 542 ONLY)** (+/-7%)

2420MM (+/-5MM) X 1220MM (+/-10MM) X **12MM (COLOURS 111 & 444 ONLY)** (+/-7%)

PATTERN REPEAT

**7MM PANEL:**

HORIZONTAL 130MM, VERTICAL 74MM

**12MM PANEL:**

HORIZONTAL 74MM, VERTICAL 130MM

PRINT

ONE SIDED ONLY ON 7MM - DOUBLE SIDED ON 12MM

PRINT TOLERANCE

HORIZONTAL +/-10MM, VERTICAL +/-10MM

SEE PAGE 5 FOR ADDITIONAL SPECIFICATIONS & PERFORMANCE DETAILS  
VISIT [WWW.WOVENIMAGE.COM](http://WWW.WOVENIMAGE.COM) FOR DETAILED PRINT LAYOUT INFORMATION

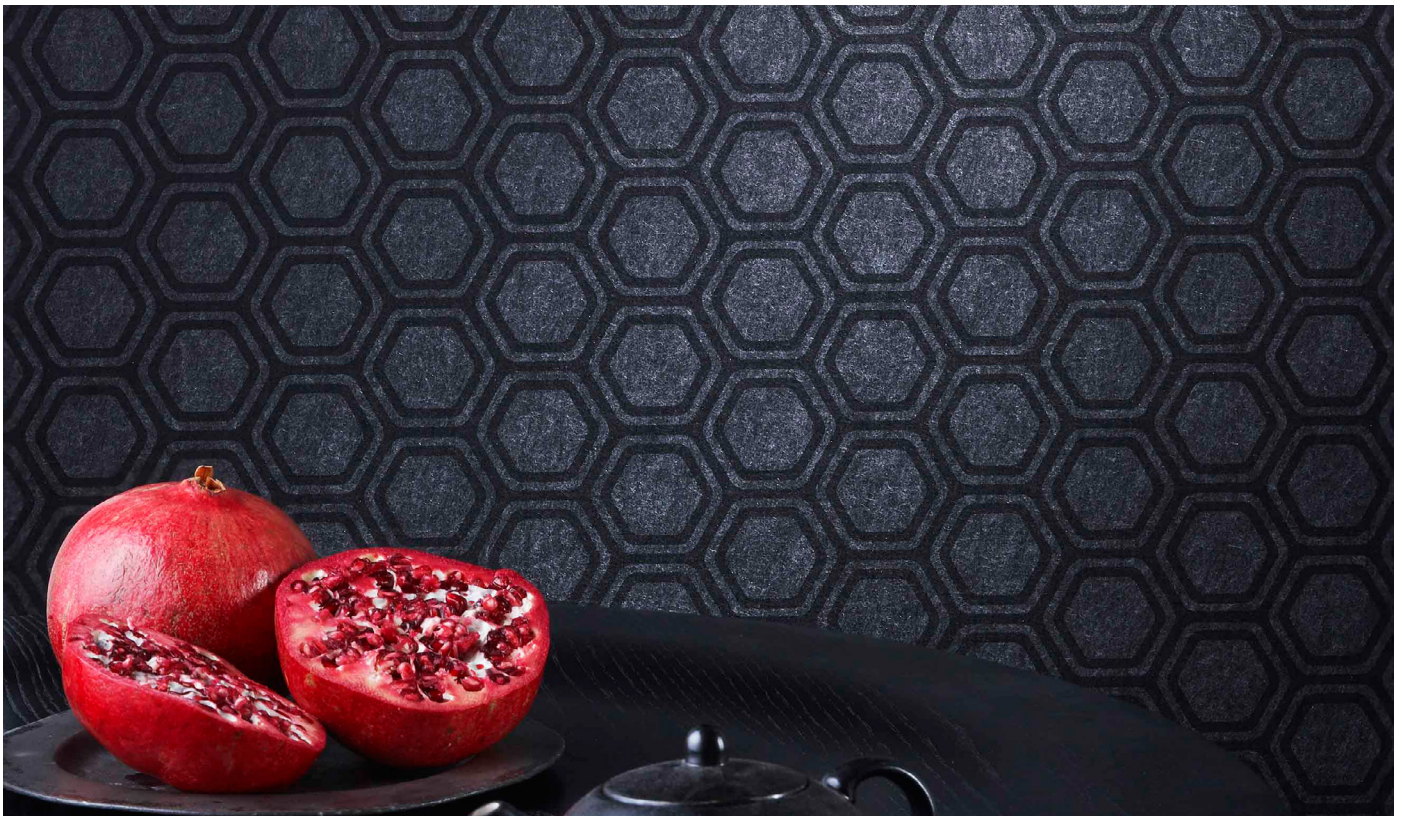
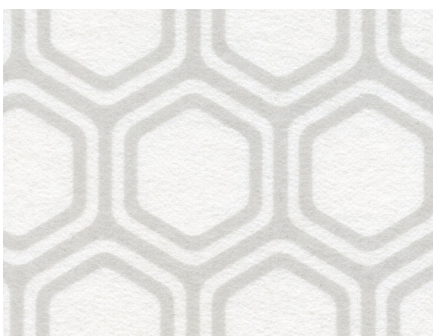


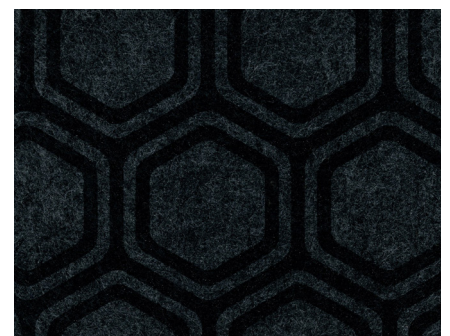
IMAGE FEATURES WALL-APPLIED 7MM PANELS IN COLOURWAY #542



444



111



542

# ECHOPANEL® PUZZLE

DESIGNED BY  
PANEL DIMENSIONS

WOVEN IMAGE

**7MM PANEL:**

2700MM (+/-10MM) X 1210MM (+/-5MM) X **7MM** (+/-7%)

**12MM PANEL:**

2400MM (+/-5MM) X 1200MM (+/-10MM) X **12MM (COLOUR 554 ONLY)** (+/-7%)

2420MM (+/-5MM) X 1220MM (+/-10MM) X **12MM (COLOURS 100 & 447 ONLY)** (+/-7%)

PATTERN REPEAT  
PRINT  
PRINT TOLERANCE

HORIZONTAL 320MM, VERTICAL 320MM

ONE SIDED ONLY ON 7MM & 12MM

HORIZONTAL +/-10MM, VERTICAL +/-10MM

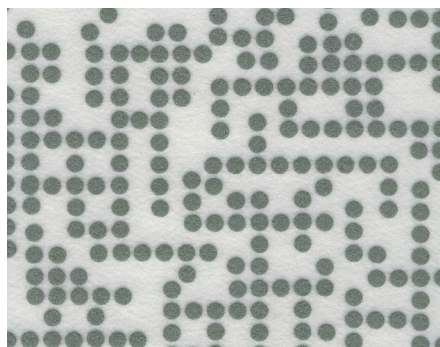
SEE PAGE 5 FOR ADDITIONAL SPECIFICATIONS & PERFORMANCE DETAILS  
VISIT [WWW.WOVENIMAGE.COM](http://WWW.WOVENIMAGE.COM) FOR DETAILED PRINT LAYOUT INFORMATION



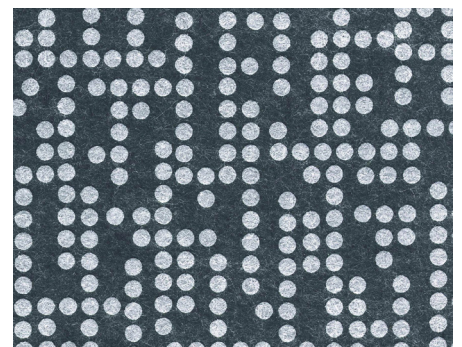
IMAGE FEATURES FRAMED 12MM PANEL IN COLOURWAY #447



100



447



554

# ECHOPANEL® RIPPLE

DESIGNED BY  
PANEL DIMENSIONS

BANG DESIGN, FOR WOVEN IMAGE

**7MM PANEL:**

2700MM (+/-10MM) X 1210MM (+/-5MM) X **7MM** (+/-7%)

**12MM PANEL:**

2420MM (+/-5MM) X 1220MM (+/-10MM) X **12MM** (+/-7%)

PATTERN REPEAT  
PRINT  
PRINT TOLERANCE

HORIZONTAL 600MM, VERTICAL 260MM

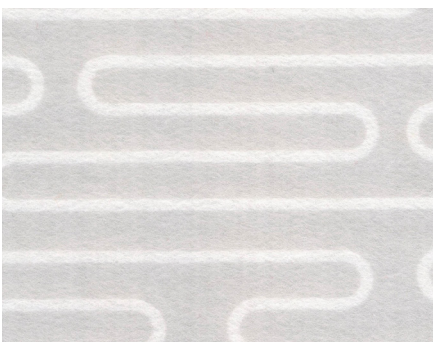
ONE SIDED ONLY ON 7MM - DOUBLE SIDED ON 12MM

HORIZONTAL +/-10MM, VERTICAL +/-10MM

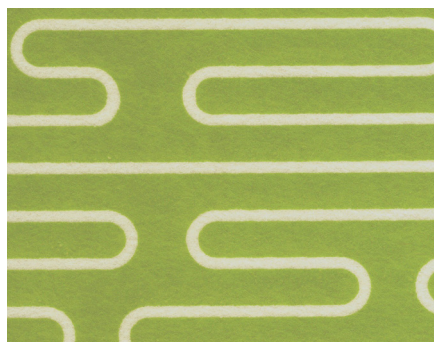
SEE PAGE 5 FOR ADDITIONAL SPECIFICATIONS & PERFORMANCE DETAILS  
VISIT [WWW.WOVENIMAGE.COM](http://WWW.WOVENIMAGE.COM) FOR DETAILED PRINT LAYOUT INFORMATION



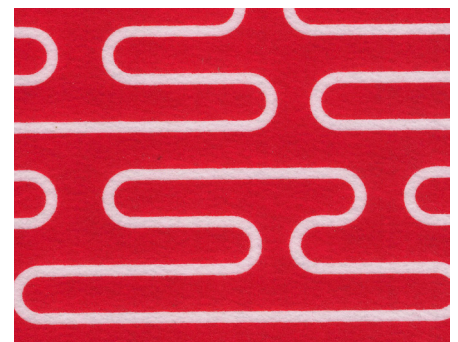
IMAGE FEATURES FRAMED 12MM PANEL IN COLOURWAY #258



440



384



258

